

Par  FORE
the
Cure

Golf Classic

9th ANNUAL JIMMY FUND *Golf* Tournament & CLAMBAKE

Saturday, June 14, 2008
Double-Barrelled Shotgun Starts

Apple Hill Golf Club
Kingston, NH (8 a.m.)

Bradford Country Club
Haverhill, MA (7:30 a.m.)



\$125 per golfer

(Includes golf, cart, shirt, lobster, clambake,
breakfast, on-course food, & much more.)

Clambake Only

\$25 per person

For Information or to Register Online
www.par4cure.com



The
Jimmy Fund®

Honoring LIVES



The Par Fore the Cure Golf Classic and Clambake honors the lives of all those affected by brain tumors, and offers hope to patients, families, and practitioners by raising awareness and funding brain tumor research through contributions to The Jimmy Fund. We strive to make this day of compassion and philanthropy the single best day anyone can spend at a golf course. Through

in-kind food donations and corporate sponsorships, we endeavor to run our events as efficiently as possible, ensuring our bottom-line donations will increase, while our guest costs remain affordable to all.

Offering HOPE

INFORMATION

Golf registration will be taken on a first-come, first-serve basis. Golfers choose which course to play, provided slots at that course are available when we receive registration. There will be separate registrations at each course. The clambake will take place at the American Legion Post 4 on the Plaistow, NH/Haverhill border immediately following the golf. Apple Hill is 13 miles from the American Legion; Bradford 8 miles.

Included in the registration fee, golfers receive 18 holes of golf, golf cart, admission to the lobster clambake and barbecue, food on the course, free entry into the hole-in-one contest, embroidered golf jersey, sleeve of balls, and various freebies.

Golfer registration deadline: June 1, 2008

Clambake registration deadline: June 7, 2008

We will accept golfer registration up until June 13 (if golf slots still remain), but we can not fill any custom, sized jersey orders for those who register after June 1. Clambake tickets available at the door, but we need an accurate count to order the lobsters.

Tournament Lodging (Book Under Par Fore the Cure)

Comfort Suites • 106 Bank Road • Haverhill

Rooms \$84 before June 1 • 978-374-7755

Apple Hill Golf Course

Nestled among the rolling hills of East Kingston, N.H. is this marvelous golf opportunity. This 18 hole course, built in 1981, has bent grass greens and Bermuda Grass fairways to give golfers plenty of variety in shots. There are water hazards that come into play on more than half of the holes. The fairways are wide and the course is well maintained. Men's and women's par are both 70. Men's yardage is 6003 and ladies is 5007.

Bradford Country Club

The 18-hole newly configured course at Bradford Country Club features 6,311 yards of golf from the longest tees for a par of 70. The course rating is 72.4 and it has a slope rating of 132 on bent grass. Bradford ownership spent the 2006–07 winter reconfiguring the entire course, including fully paved cart paths, and making parts of the back 9 a bit more golfer-friendly.

Take Your Best Shot With the
Par Fore the Cure Golf Classic's
\$5,000 DELUXE CASH RAFFLE

Tickets: \$100 each. Only 100 tickets sold.

Ticket purchase helps support this tournament.
You do not need to attend to win.

Three winners drawn:
\$2,500, \$1,500, and \$1,000

Buy one for yourself. Split with your friends!

Raffle open and available for golfers AND general public participation.

Receive two clambake/BBQ tickets with Deluxe Raffle ticket purchase.

Drawing held at the American Legion on June 14, 2008.

SILENT AUCTION

- **Two-Night Stay & Round-Trip Airfare Princess Hamilton Bermuda Hotel & American Airlines**
- **On the Field at Gillette Stadium in Full Revolutionary Regalia End Zone Militia**
- Two Round-Trip Tickets Anywhere in Europe American Airlines/Jimmy Fund
- Autographed Johnny Pesky Photo; Autographed Ozzie Smith Ball *Anonymous*
- Foursome and Full Set of Clubs with Bag *Apple Hill Golf Club Golf*
- Autographed and Framed Jonnathon Papelbon Home Jersey *Dunkin' Donuts/Arnould Gallery*
- Autographed and Framed Jonnathon Papelbon Limited Edition Silkscreen Print *Dunkin' Donuts/Arnould Gallery*
- Golf-Themed Golf Bag Gift Basket *Dunkin' Donuts*
- Autographed Bare Naked Ladies Albums; Chris Isaak Poster; John Fogerty CD; Josh Groban CD & Albums; Switchfoot CD & 45; Five for Fighting CD; Michael Buble Poster CD *Emily Boldon—Cumulus Broadcasting & AnneMarie Foley*
- Overnight Stay & Dinner for two at Aujourd'hui *Four Seasons Boston*
- Two 7-day Deutsche Bank Championship Club ticket Booklets *IMG World*
- Set of Ben Hogan Clubs with Models Cart Bag *The Jimmy Fund*

More silent auction items needed. Write mstrong180@comcast.net to help.

New auction items coming regularly. Some restrictions apply.

Check out any restrictions, descriptions, and latest updates:

www.par4cure.com

Endzone Militia

Online Auction

The auction winner and a guest will join the End Zone Militia on the field at Gillette Stadium on Thursday evening, November 13, 2008 as the Patriots continue their gametime excellence, taking on division rival New York Jets. The winners will be outfitted as militiamen, bear a standard during the game, and participate in pre- and post-game activities. This is a once-in-a-lifetime opportunity!

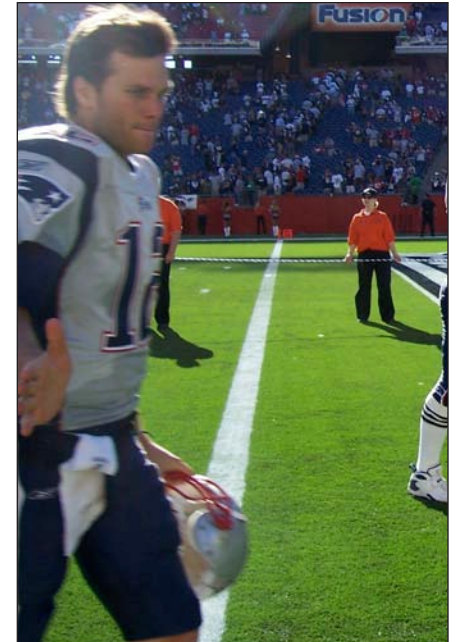
This auction began at the Golf Ball in March and will continue online through the June 14 Par Fore the Cure Golf Classic. The current high bid will be posted in real-time on the Par Fore the Cure Website, and all bidders will receive notification via email as bids are increased. Bids may be submitted via email to bids@parforecure.com until June 18, or in person at the Par Fore the Cure Golf Classic on June 14. All bidders will be notified via email on June 15 of the current high bid following the Golf Classic. Bids will be accepted via email until Wednesday, June 18 at 12:00 noon. The high bidder will be notified on Thursday, June 19.

Submitted bids cannot be retracted. In the event of a dispute, the Par Fore the Cure shall have sole discretion to determine the successful bidder.



Endzone Militia

All photos were taken by last year's high bidder at the September 23, 2007 Patriots-Bills game.



You and a Guest
ON THE FIELD

For the Thursday, November 13, 2008
Patriots-Jets Game



Hole Sponsorships

Hole sponsorship offer great exposure to your business and helps maximize our Jimmy Fund donation. For \$125.00 your name, company name, logo, and/or contact information are placed on corrugated 12"x24" signs and placed strategically around selected holes.

We will list the individual and corporate names of all hole sponsorship participants in the event program booklet.

Program Book Advertisements

Advertise your business to more than 300 golfers and guests with a program book advertisement. Space in the program booklet run as follows: Full page, \$125.00; half page, \$65.00; quarter page, \$35.00; name listing on the Patron Page (In Memory Of ... In Honor Of ...), \$5.00 per name.

We offer a special for all sponsors who purchase a hole sponsorship AND a full-page ad for \$200.00. We'll make a notation inside the program booklet that you or your company is sponsoring a specific hole.

If you do not have access to a means of creating an electronic file to place in the booklet, we will create an ad for you at no extra cost, based on your business card, an existing ad, or any kind of marketing collateral you may have.

Change the Course of Cancer Research

**Do you have change lying around your house?
Is there an overflowing coffee can of nickels,
dimes, and pennies? Bring your coffee cans,
jars, and Tupperware containers of change
to this year's golf tournament and clambake.
Everyone's combined change will alter the course
of cancer research and offer hope to those who
rely on that change.**



2008 COMBINED DONORS

A TriVision Production | Accent Magazine | ACI Creative Visual Services | American Airlines | AnneMarie Foley | API of New Hampshire | Arbella Insurance Group | Arnould Gallery | Aujourd'hui | Avila Restaurant | Boston Flower Market | Boston Hilton Logan Airport Boston Marriott Peabody | Boston Red Sox | Briar Group | Brilliant Ice Sculpture | Bugaboo Creek | CAM Media | Cape Cod Potato Chips | Carrabba's Italian Grill | The Charles Hotel | Cherrystones Aqua-Farms | Chester Brown Wholesale Florist | Color Coach | Contessa Premium Foods | Costa Produce | Courtney Chapin | Cynthia Cloutier | Danvers Butchery | David Fox, Photography | Deutsche Bank Championship | Dunkin Donuts | Emily Boldon—Cumulus Broadcasting | End Zone Militia | Epsilon | F-1 Boston | Far Corner Golf Club | Feld Entertainment | Florentia Designs | Four Seasons Boston | Fuddruckers | Gannon Municipal Golf Course | Geoff and Drew's | Gold Band Oysters | Golf Zone | The Golf Ball Committee | Harpoon Brewery | Harrold Richard Design | Harvard Pilgrim Health Care | Heather Meitner and Heather Hildebrand | The Icing on the Cake | IMG World | Improper Bostonian | James B. Merritt Sound | The Jimmy Fund | John Nagle Seafood | John Wawrzonek | Joseph Ciampa & Philip Ciampa Salon | The Joy of Old | Kanes Donuts | Karen's Kreations | Kettle Cuisine | Kowloon's Restaurant | Kristen Chapin | Lee Kum Kee's Authentic Chinese Sauces | Legal Sea Foods | The Liberty Hotel Boston | Life is Good | Live Nation | The Lyceum | Marblehead Glassworks | McKinnon Meat | Michael's Accommodating | Monadnock Water | New England Aquarium | New England Golf Guide | Old Neighborhood | Pamela Blatte and Matt Teja | ParishCommunications | Paul Bilodeau, Photographer | Peabody Essex Museum | Perkins Paper Products | Piantadosi Baking Company | Princess Hamilton Hotel Bermuda | Quinlan-Wasserman Wholesale Florist | Reebok and Don Hasslebeck | Riccardi Flowers | Ritz-Carlton Boston Common | Robert Carr Flower Wholesalers | Rostelli Meats | Sam Adams Beer | Seacoast Coca-Cola Bottling Company | The Seaport Hotel | Shaws Marketplace | Starbuck's Coffee | Stop & Shop | Tennessee Barbecue | Top of the Hub | Water's Edge Resort and Spa | WBZ-TV News | WEEI Sports Radio |

**Clambake Sponsor: Stocker Oil Company, Peabody
BBQ Sponsor: Fuddruckers Saugus, North Andover, Reading, and Methuen**

**Presenting and Corporate Sponsorships Still Available.
See www.par4cure.com for Details.**

**ParishComm: Official Printer of the 2008 Par Fore the Cure Golf Classic
For Information Call 866-772-7474
On-Demand Printing • Full Color or B&W • Business Cards
• Newsletters • Brochures • & More**

DRIVING DIRECTIONS

To Apple Hill from North of Boston

Take I-95 N toward Salisbury/Portsmouth, NH (Crossing into NH). Take the Rt. 107 exit, Exit 1, toward Kingston. Turn LEFT onto NH-107 and drive 6 miles. Apple Hill is on the right.

To Apple Hill from Boston

Take I-93 N. Merge onto I-495 N via Exit 44A toward Lawrence. I-495 becomes I-95 N (Crossing into NH). Follow directions above.

To Bradford Country Club from North of Boston

Take I-95 N. to the Rt. 133 W. exit (#54 B.), toward Georgetown. Follow Rt. 133 W. to center of Georgetown. Stay straight to Rt. 97 N. Follow Rt. 97 N. for 2 miles. Turn left onto Salem St. Follow Salem St. for 2.5 miles. Turn left onto Boxford Rd. Follow signs to Bradford Country Club.

To Bradford Country Club from Boston

Take I-93 N. to I-495 N. via Exit 44A toward Lawrence. Take the Bradford/Ward Hill exit (#48). Stay to the right. Turn left onto Rt. 125 N. at second set of lights. Follow Rt. 125 N. 2.5 miles, past Bradford College. Turn Right onto Salem St. after the common. Follow Salem St. for 1.25 miles. Turn right onto Boxford Rd. Follow signs to Bradford Country Club.

To the American Legion/ Post 4/Clambake from North of Boston

Take I-95 N oward Portsmouth NH/Salisbury. Take exit 58B for RT-110 W toward Amesbury/I-495. Merge onto John Greenleaf Whittier Hwy/Macy St/RT-110. Merge onto I-495 S via the ramp to Haverhill. Take exit 51B-A for RT-125 N toward Plaistow NH. Merge onto Main St/RT-125. You will drive through three sets of lights, passing a Starbucks, Friendly's, and McDonalds on your left. At the third set of lights, stay straight through lights to Route 121 (do NOT follow Route 125 towards Wendy's). You will see the parking area for the clambake on the left side. The American Legion is just up on the left, 1314 Main Street, Haverhil.

To the American Legion Post 4/Clambake from Boston

Take I-93 N toward Concord, NH. Take exit 44A to merge onto I-495 N toward Lawrence. Take exit 51B for RT-125 N. toward Plaistow, NH. Merge onto Main St./RT-125. Follow directions above.

ENTRY FORM

Register online at www.par4cure.com

Shirt Size
M or F

1. _____
2. _____
3. _____
4. _____

We will fit proper jersey sizes only if received by June 1.

Captain's Contact Information:

Name _____

Phone _____ Email _____

Apple Hill Golf Club: Tee Time 8:00 A.M., Registration 6:00 A.M.

Bradford Country Club: Tee Time 7:30 A.M., Registration 5:30 A.M.

Course selection given on a first-come, first-served basis.

\$125.00 Per Golfer X# of golfers _____

\$25.00 Clambake/BBQ Only (Children under 12 FREE) X# of guests _____

\$125.00 Hole Sponsorship _____

Book Sponsorship (\$125.00, \$65.00, \$35.00, \$5.00)..... _____

\$200.00 Hole/Book Sponsorship _____

\$100.00 Deluxe Raffle Tickets..... X# of tickets _____

I/We Cannot Attend. Please Accept This Donation..... _____

Total Enclosed (Make Checks Payable to Par Fore the Cure) _____

Return to: Par Fore the Cure 22 Maverick Street, Marblehead, MA 01945

I/We Attended the Golf Ball (Complimentary Clambake). . . . # of guests _____

Name(s) of clambake guest(s):

The Jimmy Fund and Jimmy Fund Golf Program



Since 1983, the Jimmy Fund Golf Program with more than 150 annual events has provided individuals and businesses the opportunity to support cancer research and patient care at the Dana-Farber Cancer Institute through participation in their favorite pastime — golf! The Jimmy Fund supports the fight against cancer at Dana-Farber, helping raise the chances of survival. Since 1948, thousands of events, coupled with the generosity of millions of people like you, have helped the Jimmy Fund save countless lives by furthering cancer research and care.

The Center for Neuro-Oncology

Provide expert care and treatment for patients with brain tumors. Through clinical and basic research, the program discovers new and effective therapies for the treatment of patients with brain tumors, including chemotherapies, differentiating agents, medications, gene therapy, and new molecular agents. The program also develops innovative strategies to enhance the therapeutic effects of chemotherapy and radiation. Another goal is to bring new agents and strategies from the lab to the patient.



David B. Perini, Jr. Quality of Life Clinic

Childhood cancer was once universally fatal, but today, a majority of children diagnosed can expect to survive long-term. This comes with complex issues relating to survival and quality of life: long-term effects of treatment, risk of second cancers, and social and psychological issues. A team of health care professionals specializing in issues affecting survivors provide services. Clinical and research activities are made possible by hundreds of generous supporters like you.



The Pan-Massachusetts Challenge

The PMC raises money for cancer research and treatment at Dana-Farber through its Jimmy Fund. The centerpiece of their efforts is an annual bike-a-thon that crosses Massachusetts. Committed cyclists and volunteers are essential to the PMC meeting its goals. They strive to inspire even more proponents in order to raise more money and afford Dana-Farber's doctors and researchers the necessary resources to discover cures for all cancers.



Two COURSES
One CAUSE